

leDE Harmonist Data Toolkit Report for SITE Hogwarts

Report date: 2020-08-17

Example Harmonist Toolkit Report

Total number of patients from Program Hogwarts in dataset: 594

Dataset Summary

Table 1: Table Summary

Table	Records	Patients	Age at Enrollment					
			0-4	5-9	10-14	15-19	20-24	Adults 25+
tblBAS	594	594	0	0	0	21	48	525
tblLTFU	594	594	0	0	0	21	48	525
tblVIS	21033	537	0	0	0	21	46	470
tblLAB_CD4	5303	557	0	0	0	20	47	490
tblLAB_RNA	3140	461	0	0	0	18	38	405
tblART	3719	536	0	0	0	19	42	475
tblDIS	36	36	0	0	0	0	0	36

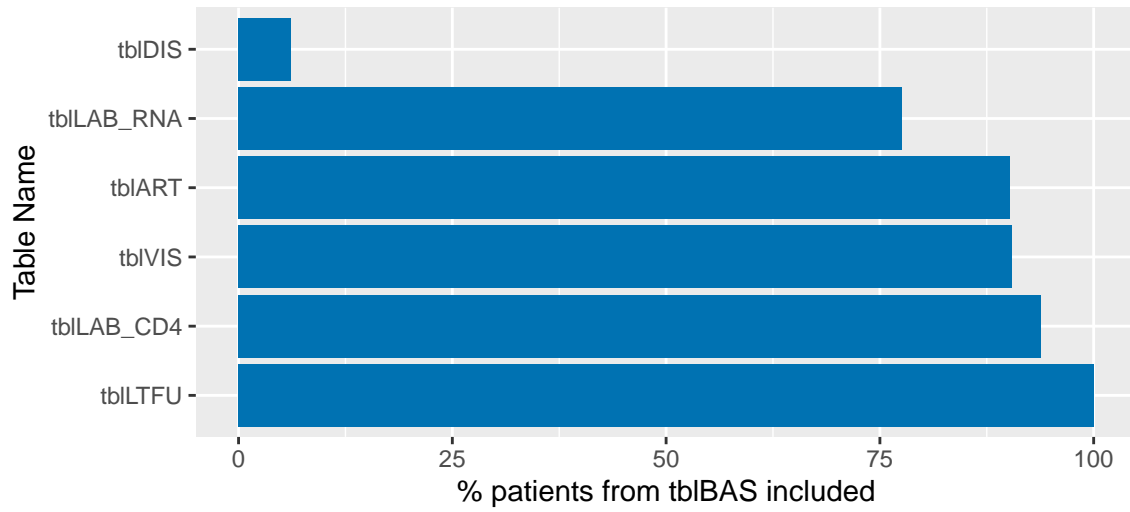
Table 2: Summary statistics from uploaded tables

Value	Count	Percent
Deceased		
No	496	83.5
Yes	98	16.5
Treatment Naive at Enrollment		
No	41	6.9
Yes	553	93.1
Receive Antiretroviral Therapy (ART)		
Yes	536	90.2
Missing	58	9.8

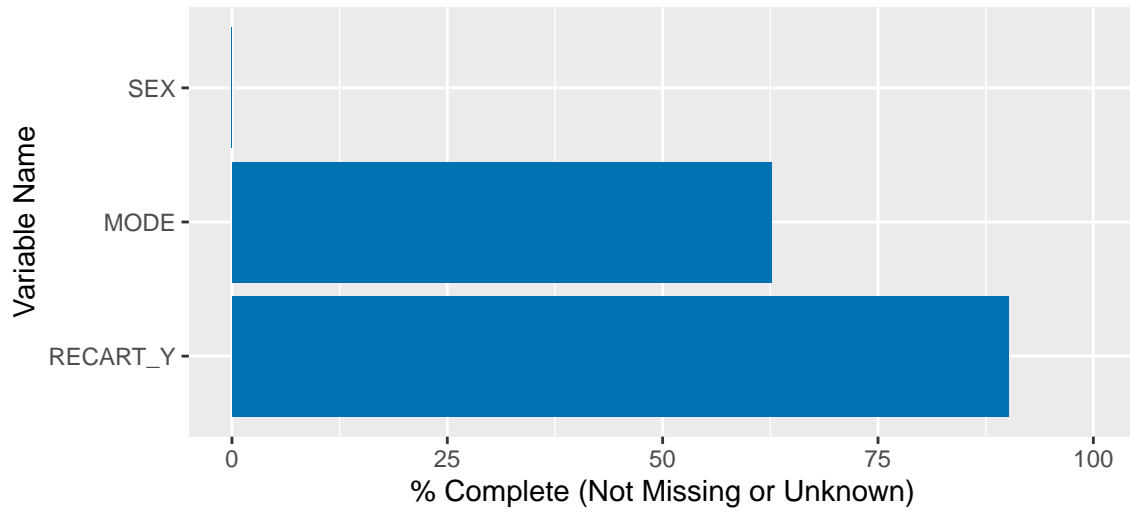
Table 3: Number of observations per year

Variable	< 2012	2012	2013	2014	2015	2016	2017	2018	2019	2020	Total
Enrolled	459	39	15	36	23	21	0	0	0	0	593
Visits	9722	1758	2348	2393	2565	1995	252	0	0	0	21033
Deaths	65	10	9	9	3	2	0	0	0	0	98
Transfers Out	4	1	2	5	6	3	0	0	0	0	21
Viral Load	1082	461	501	304	501	289	2	0	0	0	3140
CD4	2806	492	534	528	560	347	36	0	0	0	5303

% Patients from tblBAS Included in Other Tables



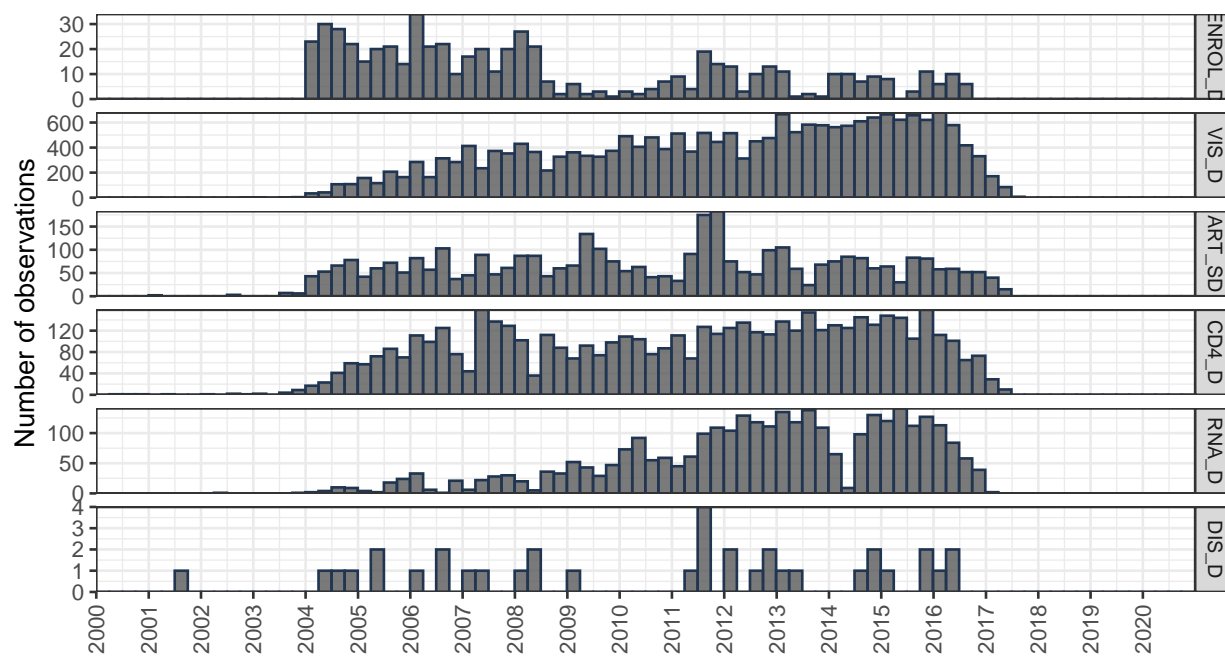
Percent Complete Data (Not Missing or Unknown)



Histograms of important dates in SITE Hogwarts

SITE: Hogwarts

(Note: 23 observations before year 2000 and 1 observation after year 2020 are hidden)



Data Quality Summary for PROGRAM Hogwarts

Note: download Error Detail spreadsheet for more information

Table 4: Summary of Errors

Description	Variable	Count	Percent
tbIBAS			
Missing Required Variable	SEX	594	100.0
Future date	ENROL_D	1	0.2
tbILTFU			
L_ALIVE_D before ENROL_D	L_ALIVE_D	1	0.2
tbIART			
ART_ED before ART_SD	ART_ED	1	0.0

All coded variables had valid codes

Table 5: Summary of Important Missing Variable Entries

Table	Variable	Count	Percent
tbIBAS	SEX	594	100.0
tbIBAS	RECART_Y	58	9.8